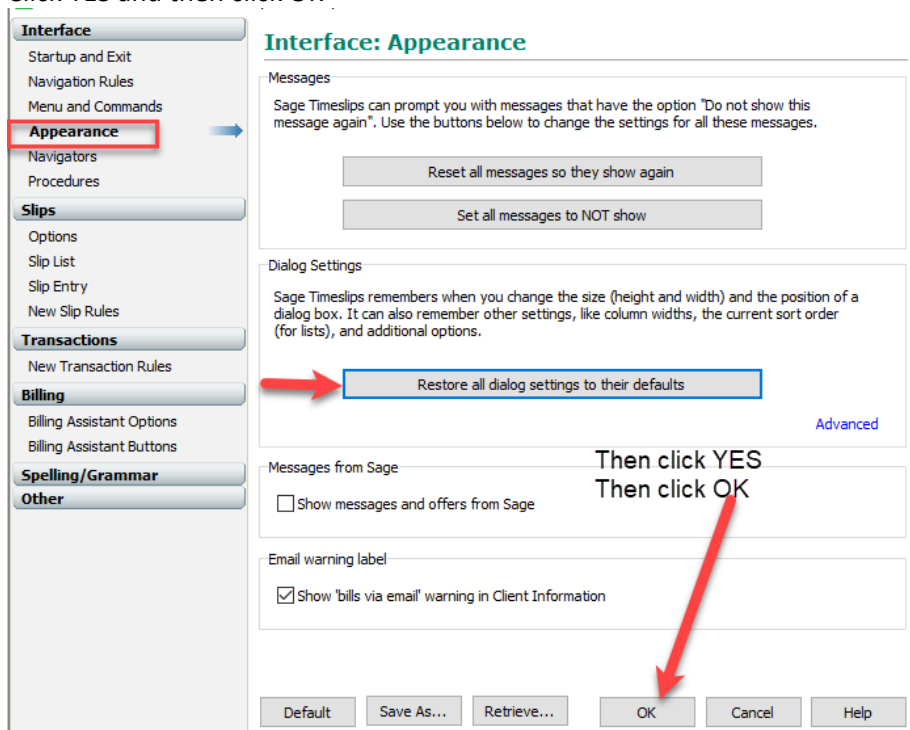


Timeslips Tip: Restore All Dialog Settings to Default

Here are steps to Restore All Dialog Boxes to Default:

1. From the top menu click WINDOW .. CLOSE ALL
2. Then click SETUP ... PREFERENCES
3. Select the tab that says "Appearance"
4. Click the "Restore all dialog setting to their defaults"
Click YES and then click OK



5. To re-show the navigator, click SPECIAL ... NAVIGATOR or click the compass icon on top

